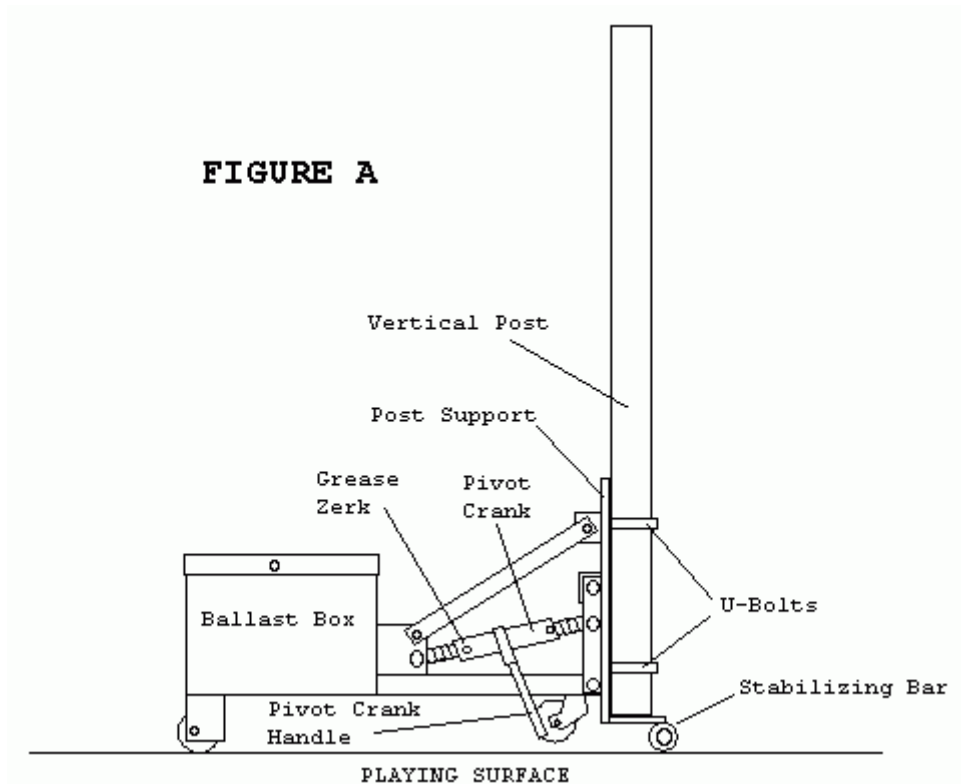


RollAbout Portable Series Assembly Instructions



Bill of Materials

- A (1) Portable Base Assembly
- B (1) 4" Vertical Post
- C (2) ½"x 4" Square U-Bolt
- D (4) ½" Lockwasher
- E (4) ½" Hex Nut
- F (1) Vertical Post Pad
- G (1) Pivot Crank Handle
- H (1) Cotter Pin

1. Remove portable base from shipping pallet. For your convenience your RollAbout portable basketball goal has been 95% pre-assembled.

2. Remove the Ballast Cover from each Ballast Box on base of unit and install ballast. **WARNING!!** Failure to install minimum required ballast may result in serious injury! A minimum 240 lbs. of counter balance weight is required in the ballast compartments (120 lbs. per ballast box). Solid cement blocks are recommended, a minimum of (8) 4"x8"x16" solid cement blocks should be placed inside the ballast box compartments at the back of the unit (4 blocks per ballast box). Blocks can be purchased at any home builders supply center. **DO NOT PROCEED WITH ASSEMBLY UNTIL 240 LBS. OF BALLAST HAVE BEEN INSTALLED!**

3. Re-attach Ballast Box covers.

4. Using (2) ½" U-Bolts, lockwashers and hex nuts, attach the Vertical Post to the Post Support on the base unit as shown in Figure A. Tighten nuts until snug.
5. Attach Pivot Crank Handle to Pivot Crank using the Cotter Pin provided. (See Figure A)
6. ATTACH EXTENSION ARM SYSTEM, BACKBOARD AND RIM FOLLOWING THE APPLICABLE PORTION OF THE INSTRUCTIONS PROVIDED WITH YOUR EXTENSION ARM ASSEMBLY.
7. Attach the vertical post padding. The post pad wraps around the vertical post and secures with the velcro straps on the back side. The small velcro strap must be wrapped around the stabilizing bar at the bottom of the unit. (see figure A)
8. Assembly of your RollAbout portable basketball goal is complete! Please read the accompanying instructions for operation and storage.

Operating Your RollAbout Portable Goal

Moving the unit: To move the unit you must first lower the vertical post to a horizontal position. To do this simply crank the "pivot crank handle" (see Figure A). **WARNING!!! Make sure the pivot crank is set to lower the post!! There is a reversing lever on the pivot crank that determines the UP or DOWN movement of the post. Be sure the lever is properly set before actuating the pivot crank! If pivot crank is overly difficult, make certain the reversing lever is positioned properly!! WATCH THE POST MOVEMENT TO DETERMINE IF IT IS CRANKING THE POST IN THE PROPER DIRECTION!!** As the vertical post pitches backward the front castor wheel will engage the playing surface. At this point the unit can be rolled, however First Team recommends lowering post all the way down to horizontal before moving unit. Reverse the pivot crank to raise unit to playing position. The unit is designed with a built in "bump stop." When the post support bumps up tight against the base unit, stop cranking! The unit is now ready for play. First Team recommends removing the Pivot Crank Handle prior to playing on the unit.

Maintaining Your RollAbout Portable Goal

Though your RollAbout portable goal is designed and coated to withstand the elements, it is not advisable to leave the goal system outdoors for extended periods of time. If this cannot be avoided follow these steps to increase the life of the unit.

1. Grease the Pivot Crank. There is a grease zerk located at each end of the crank casing (see figure A). Note: Crank should be greased as needed regardless of whether the unit is left outdoors.
2. Keep unit covered when not in use. Use of a tarp or other waterproof cover similar to a grill cover, this will help keep the unit dry and prevent rust.

Additionally, check all bolts and nuts periodically to make sure they are tight and secure. Following these simple points will keep your RollAbout portable goal in top operating condition season after season.